



Financial Legacy Partners  
WEALTH ADVISORS OF  
**RAYMOND JAMES®**

25 E Liberty Lane // Danville IL 61832 // (217) 431-0307  
www.flppartners.com

A SIMPLE PHILOSOPHY  
A POWERFUL COMMITMENT

Few things withstand the test of time like a solid relationship.  
Throughout life's many stages, we'll be there.

Retirement Planning • Education Planning • Portfolio Management  
Estate & Trust Funding • Charitable Giving

**Chris Kittell, CFP®**  
*Senior Vice President, Investments*

**Karla Gifford, MBA, CPFA, AAMS®**  
*Associate Vice President, Wealth Management*

**Suzy Goben**  
*Senior Service & Marketing Associate*

**Becky Tapscott**  
*Senior Client Service Associate*

**Reagan Gifford**  
*Client Service Associate*

Raymond James & Associates, Inc., member New York Stock Exchange/SIPC

# RED MASK PLAYERS

present



by HENRY LEW  
JONATHAN SAYER & HENRY SHIELDS

Directed by DARREN KILBURY

**MARCH 31,  
APRIL 1-2 & APRIL 6-8, 2023**



**GOLD SPONSORS**

Heritage Development Services

**SILVER SPONSORS**

Bill Lucas/Carmack Car Capitol

**DIAMOND SPONSORS**

KISS/KOOL • WDNL • WITY Radio

**RED MASK BOARD OF DIRECTORS**

Lisa Lovelace • Amanda France • Jamey Coutant • Sue Harden  
 Jenna Brown • Nathan Henderson • Tricia Hogg • Debbie Prentice

**FROM THE DIRECTOR**

Life is hard. Every day, something happens that makes us wonder if people can ever get along. Political, religious, and racial issues keep pulling us apart. That's why I love community theater. It's a place for everyone to sit back, relax, laugh, and/or cry together. When you're sitting in your seats, you're not a color or a stereotype, you're just part of the community. Our community.

This play is about a struggling community theater company that tries to entertain but ends up falling apart. You'll notice, though, that they never give up. When you're laughing and applauding, just know, that we never give up either. Red Mask has been around for years because of people like you. People that take the time to buy a ticket, sit in our seats, and love what we do. Even when it might fall apart!

Our rich history of making plays is also part of your history. Why? Because YOU are our community. And we are YOUR theater. Please keep coming back. I promise we'll be here, trying our best to entertain you...especially when the set falls down around us.

*Darren Kilbury, Director*



# THE PLAY THAT GOES WRONG

Presented by arrangement with Dramatists Play Service under license from Mischief Worldwide Ltd. The Mischief Production of THE PLAY THAT GOES WRONG was originally produced on the West End Stage by Kenny Wax & Stage Presence and on Broadway by Kevin McCollum, J.J. Abrams, Kenny Wax & Stage Presence.

The Play that Goes Wrong was first presented by Mischief Theatre under the title The Murder Before Christmas on 4th December 2012 at the Old Red Lion Theatre in London.

THE PLAY THAT GOES WRONG by Henry Lewis, Jonathan Sayer & Henry Shields © 2012, 2014 Mischief Worldwide Ltd. All rights reserved.

THE PLAY THAT GOES WRONG, the "Falling G" logo device, Mischief and Mischief Theatre are trademarks of Mischief Worldwide Ltd. All rights reserved.

This production is presented by arrangement with Dramatist Play Service under license from Mischief Worldwide Ltd.

For Mischief Worldwide Ltd.: Directors: Mark Bentley, Jonathan Burke, Henry Lewis, Kenny Wax Head of Licensing: Sacha Brooks

Exclusive Agent for Literary Rights: Nicki Stoddart, United Agents LLP, London

For information about all Mischief works, please visit [www.mischiefcomedy.com](http://www.mischiefcomedy.com)





## MEMBERS OF THE CORNLEY DRAMA SOCIETY

(In Order of Appearance)

Annie (the company's stage manager)..... Suzy Goben  
 Stage Crew ..... June Techtow, Rachele Abner, AvaGrace Allsopp  
 Taylor (the company's lighting and sound operator) ..... Amanda Brown  
 Chris (the head of the drama society, directed the play  
 and plays Inspector Carter) ..... Edward Sant  
 Jonathan (plays Charles Haversham)..... Jacob Ault  
 Robert (plays Thomas Colley Moore)..... David Techtow  
 Dennis (plays Perkins) ..... John Dowers  
 Max (plays Cecil Haversham & Arthur the Gardener) ..... Jeff Romig  
 Sandra (plays Florence Colley Moore) ..... Sidnee Davis

The action takes place on the opening night of the Cornley Drama Society's  
 production of *The Murder at Haversham Manor*  
 by Suzie H.K. Brideswell. Present day.

## CHARACTERS IN *The Murder at Haversham Manor*

(In Order of Appearance)

CHARLES HAVERSHAM, the deceased.  
 THOMAS COLLEYMOORE, Charles' old school friend.  
 PERKINS, Charles' butler.  
 CECIL HAVERSHAM, Charles' brother.  
 FLORENCE COLLEYMOORE, Charles' fiancée and Thomas' sister.  
 INSPECTOR CARTER, an esteemed local inspector.  
 ARTHUR THE GARDENER, the gardener at Haversham Manor.

The action takes place in Charles' private rooms at Haversham Manor on the  
 evening of Charles and Florence's engagement party. Winter 1922.



## FROM THE PRESIDENT...

We are more than happy to end our 2022-23 season with a laugh or two.  
 Or three or four! Because our patrons enjoy comedies so much, the humor  
 will continue throughout our 2023-24 season.

*Vanya & Sonia & Masha & Spike* will be our Autumn season opener.  
 This riotous comedy by Christopher Durang won a Tony award for Best  
 Play. Next up will be *Picasso at the Lapin Agile*, a wry comedy by the  
 one and only Steve Martin. Einstein and Picasso walk into a bar...Finally,  
 to round out our season, we will present *Lost in Yonkers*, a Pulitzer Prize  
 winner, by Neil Simon. This warm and funny play offers something for  
 everyone.

Red Mask members receive three tickets. Red Mask sponsors receive  
 even more! To learn more about becoming a sponsor, please contact  
[redmaskplayers@gmail.com](mailto:redmaskplayers@gmail.com) or leave us a message at (217) 442-5858.

Memberships, sponsorships, and donations fund our nonprofit  
 organization. We count on them to fund our theatrical season. I urge you  
 to become a member for our next season. Come share some laughs with  
 us!

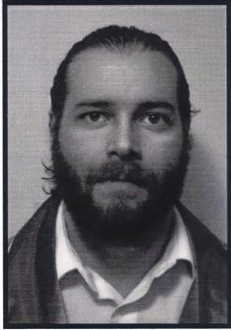
*Lisa Lovelace*  
*President, Red Mask Players*







## THE COMPANY



**JACOB AULT (Jonathan/Charles Haversham)** Recently, Jacob was seen in *Who's Afraid of Virginia Woolf?* and *Bleacher Bums*. When not on stage, Jacob models knee socks, acts as a body double, and performs stunt work for friends and family. No one buys a knee sock without seeing it on Jacob first!

**AMANDA BROWN (Taylor)** High school student by day. Trained dancer by night. Amanda may not be tripping the light fantastic for *The Play that Goes Wrong*, but she will trip over a dead body! You might have recently seen her in a production of *Legally Blonde*.



**JENNA BROWN (Stage Manager)** Dance mom, efficiency expert, executive assistant, board member, Jenna is the last one to take credit and the first one to make things happen. She gave up her job as a fixer in L.A. after entering the witness protection program. We're so lucky she was relocated to Danville.

**SIDNEE DAVIS (Sandra/Florence Colleymore)** You may recognize Sidnee from her commercial modeling days, where she was a representative for Vidal Sassoon hair products. She generally spends her time running after all her children, which prepared her for the physical demands of this comedy. However, after having 10 children, we are concerned for her wellbeing.



We love the **Community**  
in our **Community Theater**



**Heritage Development Services**

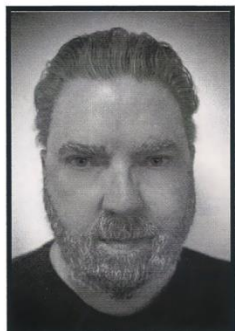
Commercial Facility Leasing

217-304-2365



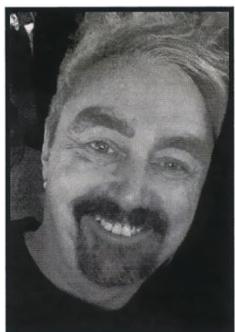


**THE COMPANY**



**JOHN DOWERS (Dennis/Perkins)** John played Thornbird Chickenwing III in *Murder in the Magnolias* on the Red Mask stage and then disappeared. First, we heard a rumor that John was filming a Christopher Guest horror film parody in the Sudan, and then we heard that he was the understudy for Catherine O’Hara as Moira Rose on *Schitt’s Creek*. He neither confirms nor denies those rumors. Nevertheless-welcome back, John!

**SUZY GOBEN (Annie)** Usually, you can find Suzy belting out a tune for DLO, but this spring, Red Mask gets her! To play Annie, Suzy graciously agreed to forego her annual walk down the red carpet at the Oscars. You might remember seeing her arrest in 2018 on TMZ. Ryan Seacrest shouldn’t have tackled her like that! Suzy’s husband, Rich, enables Suzy’s theatrical obsessions. He hopes to retire before he’s 80.



**DARREN KILBURY (Director)** Darren started his acting career in grade school when he was the little brave that could run through raindrops without getting wet. This started a long desire to run around in underwear onstage, but sadly, never happened again. Darren has acted on stages in Chicago, New York, and Los Angeles, but loves his time here in Danville. He would like to say it’s because he values Red Mask, but all agree it’s because he thinks someone will finally let him do a show where he runs around in underwear again.

www.sunsetfuneralhome.com

**PHONE: (217) 442-2874**

IF YOU WANT TO BE CONNECTED TO YOUR COMMUNITY, THE COMMUNITY CONNECTION IS YOUR PODCAST.



THE COMMUNITY CONNECTION PODCAST  
HOSTED BY LAURA WILLIAMS



LIVE WEEKDAYS AT 7:30AM ON 1490 WDAN & AVAILABLE ON ALL YOUR MAJOR PODCAST PLATFORMS.



*Kelly Printing Co., Inc.*  
**supports the RED MASK PLAYERS**

205 Oregon • Danville • M-F • 8 am - 3:30 pm

**217.443.1792**

**FAST TURNAROUND & AMAZING CUSTOMER SERVICE IN BOTH DIGITAL & OFFSET PRINTING.**

*∞ 1969 - 2023 ∞*



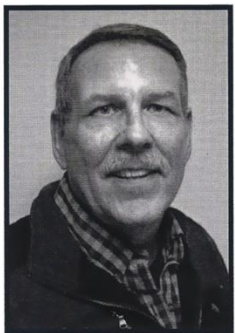
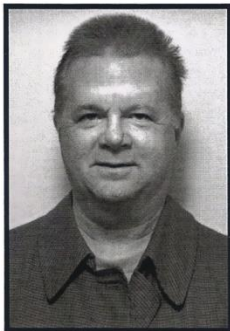


**THE COMPANY**



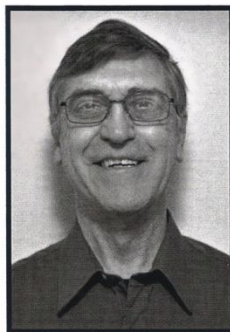
**LISA LOVELACE (Producer, Assistant Director)** Lisa has been with Red Mask ever since Hollywood started making talkies and she lost her career on the silent screen. Although you wouldn't know it to look at her, she is 125 years old. After years of isolation and caring for several stray dogs, she forged her way through the many boxes and newspapers she had hoarded and ended up back in front of the stage door. After weeks of begging, she was taken in and given the worst job we could think of- Board President. Under her leadership, we have updated our computer system to 1996 technology, and we finally got a new pencil sharpener. Once she has a hip replacement, there's no telling what she'll accomplish next!

**JEFF ROMIG (Max/Cecil Haversham/Arthur the Gardener)** Jeff was heavily involved with Red Mask, but then left after claiming he was becoming a doctor. It turns out that Jeff was traveling the country as part of the national touring company of *Cats*. He made an amazing Mr. Mistoffelees. Jeff came back to Danville, and now says he's a doctor at the V.A. We've not received confirmation.



**EDWARD SANT (Chris/Inspector Carter)** A well-known character actor and painter, Ted traded the German accent from his last stage role for an as-yet-to-be-determined British accent for *The Play That Goes Wrong*. When not performing, Ted may be found wandering the streets mumbling about people and turn signals. We're not sure what's happening, but we think he lives in an area where everyone has their turn signals on but never turn.

**DAVID TECHTOW (Robert/Thomas Colleymoore)** Because of his deep bass voice, Dave was the voice of Daffy Duck for many years. Deciding he needed to leave his house, he turned to acting as a member of Red Mask Players. In his spare time, he gives lectures (complete with colorful slides) about his many travels to foreign climes, kayaks the Vermilion River, and fields calls to help build stage sets.



**BEHIND THE SCENES**

**Director** ..... Darren Kilbury  
**Producer & Assistant Director** ..... Lisa Lovelace  
**Stage Manager** ..... Jenna Brown  
**Set based on a design by** ..... Lee Bridgman  
**Set Construction by** Dave Techtow, Lee Bridgman, Cast & Crew  
**Lighting Design**..... Darren Kilbury  
**Program Design & Printing**..... Kelly Printing Co., Inc.

**COMING ATTRACTIONS**

**KotrGrimm Theatrical Storytellers**

*Clue*

April 14-16, 2023

**Red Mask Children's Theater**

*The Reluctant Dragon*

May 12-15, 2023

**DLO Musical Theatre**


*Seussical*

May 19-21, 2023

**SPECIAL THANKS**

**KotrGrimm Theatrical Storytellers**



**DLO Musical Theatre • Janice Kain • Hannah Shillo**



Over 40 Years of  
**COUNCIL OF SALES  
 LEADERSHIP**

**William L. Lucas**  
 Sales Consultant

**Carmack Honda - Hyundai**  
 3724 N. Vermilion St.  
 Danville, IL 61832  
 Cell: 217.474.0735  
 wlucas3724@aol.com

*Proud Supporter of Red Mask Players!*